

The 21st Century is bringing with it new challenges and modes of engagement. Conceiving an educational facility that effectively responds to these new opportunities, technologies and demands, requires folding in the most appropriate lessons from the past along with a grasp of the emerging roles for learning and teaching.

When the project calls for a container to house a school of Architecture, Building and Planning the built fabric must assume a role of teacher as well as shelter. In this mode, we will consider the building to be an active, dynamic and inspirational instructor.

## We propose to consider the new building as a city.

It will enable a strong learning community which extends beyond the walls of the building and beyond the grounds of the university. The site will become a catalyst for educational events. The new facilities will be considered as a coherent village and, thus, the question becomes one of how to curate a successful urban design framework to make sense of difference. The process allows for multiple voices and a diversity of input resulting in differing styles, spaces and emphasis. Within an Urban Framework our proposal also makes room for contributions from the wider architectural community, through invited inclusion in the design stages and through future competitions for new spaces and pavilions. The aim is to establish an inclusive sense of ownership and engage with plurality.

In our view, the building must be an arena of and for on-going discourse on the built environment and promote multiplicity.

The architecture of this new facility must be grounded in emerging approaches to place making and practice.

This is an architecture where process reigns over form. Coherence and legibility are vital and pursued through a rigorous curation and interrogation of process, utilising successful models of urban design.

We are proposing a building that enables culture and is able to broadcast that culture as it unfolds, evolves and moves.

We are proposing an **open source architecture**, which is continually relevant and where intellectual endeavours will be celebrated and exhibited.

Our team members have an inclusive approach to intellectual investigation and engage in open discourse as educators and practitioners. Our collaborative entry is applied to changing the figurehead model of practice and acknowledging architecture and building as team propositions. Each of our individual firms herald the organism of production over a single author.

Our meritorious capability is outlined further on page 6.





## A Pluralistic Platform

This proposal recognises that this new school will house varied disciplines with many approaches to the built environment. It is appropriate that the new facilities respond and encourage this pluralistic environment. The existing building successfully engages with an ethos of accrual. Existing artefacts, such as the Bank of New South Wales façade and the Japanese room, provide a legacy and a connection to the past life of the Faculty. The design solution will set up a cohesive framework, both intellectual and physical, within which a range of diverse local solutions will be inserted. The framing, curation and placement of these individual destinations sets them up as elements of a greater narrative rather than an aimless cacophony. The aim is to create real dialogue between spaces and architecture.

Our urban design framework will identify strategic areas where it is appropriate and desirable for us to solicit design input from additional designers and artists. These interventions would be confined to elements, surfaces, facades and destination spaces. This input will be carefully choreographed to achieve a legible, balanced and coherent whole. Our team brings many voices to the proposal however we will be working together to achieve unity. The involvement of practitioners outside of our team will contribute real difference and variation. The built heritage will be stronger for its diverse content.

The façade of the building will be considered as a tapestry, the interior a set of worlds.

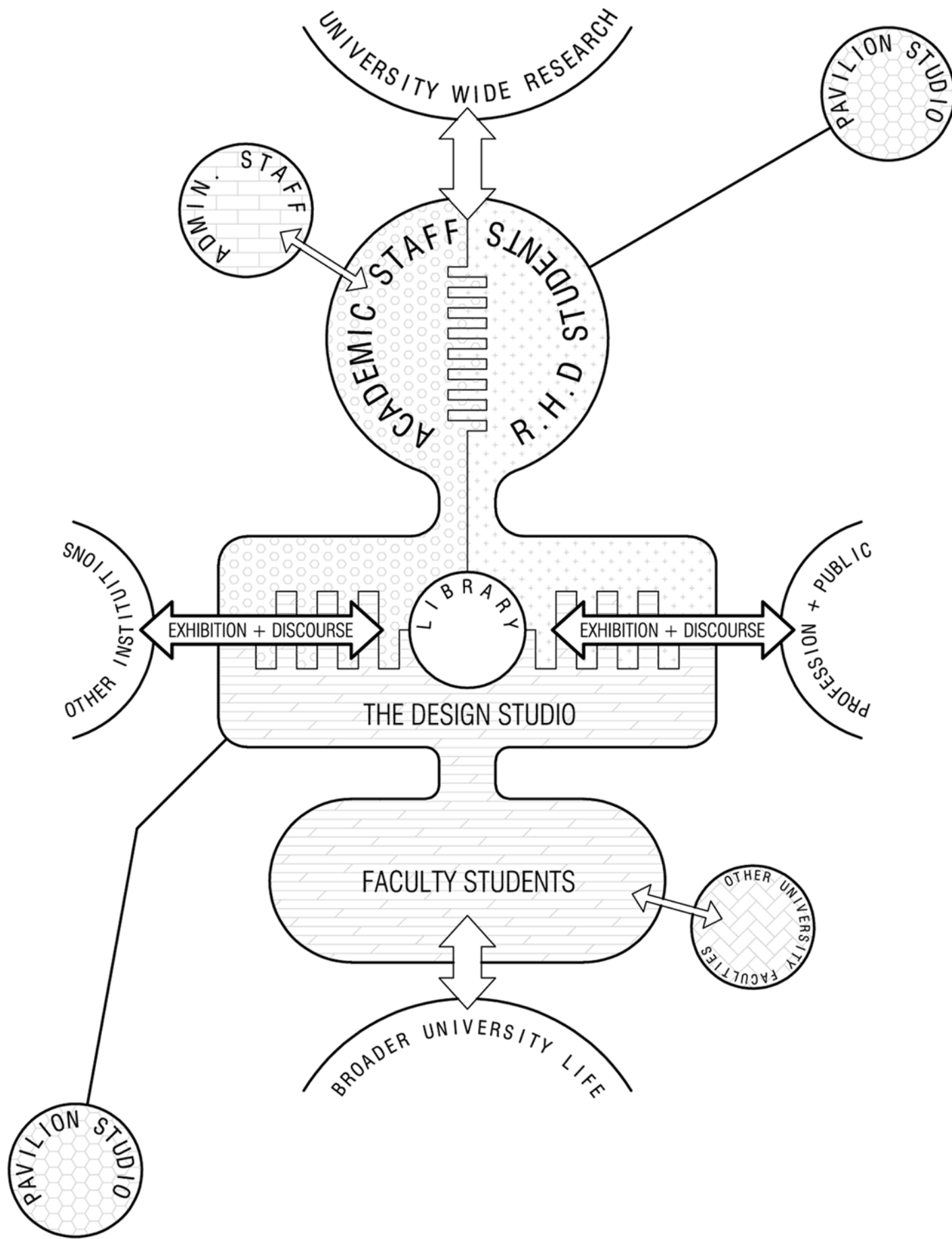
The scheme would establish an active discourse on and off of campus by ensuring the new complex acts as generator and facilitator, publisher and broadcaster. Many universities internationally and locally are very successful at promoting their campuses through their built environment and progressive building programs. Melbourne University should now grasp this opportunity to create a more contemporary and dynamic iteration. To broadcast and involve the vibrant Melbourne architectural community is our aim with the new building. To incorporate international architects in a climate of an architectural condenser will aid local debate and put the new building on the world stage. Additionally, the ground floor needs to showcase the wealth of intellectual and especially graphic production that takes place within. To broadcast the quality and quantity of student and academic work in a physical manner is paramount. Publish or perish.

This proposal will also focus on the establishment of a community of learning through the metaphor of building as city. The multiple layers and complex combinations of spaces and adjacencies this dictates provides dynamic situations and environments for learning, teaching and research.

There will be an emphasis on opportunity laden spaces.

At ground level this will be achieved through an open and activated pedestrian plane and the manipulation of existing campus networks. The new urban solution will pull in the life of the university, ensuring the existing networks are diverted into the new spaces of the Faculty. We aim to create spaces for activity to pond and contribute to the life of our new village. Inherent in a village approach is the notion of difference. The varied nature of spaces and networks with multiple destinations and journeys will allow a richness of life to evolve and prosper.





# The Orator and the Monk

## Spaces for communication and reflection

Between the dichotomy of the orator and the monk, in the design of learning and teaching spaces, lie a series of different spatial metaphors, all of which need to be incorporated to ensure a faculty that can promote quality academic interaction.

The new building will provide spaces which enable communication, encourage collaboration, and support multi-disciplinary investigations. There must be provision for debate and discussion, both formal and incidental as well as intimate spaces which allow quiet, individual study and research. These spaces will encourage the development of a strong collegiate spirit and peer respect amongst research students and the academic staff along with a vivid engagement in the Melbourne University community.

Our team has, and is able to produce these types of space.

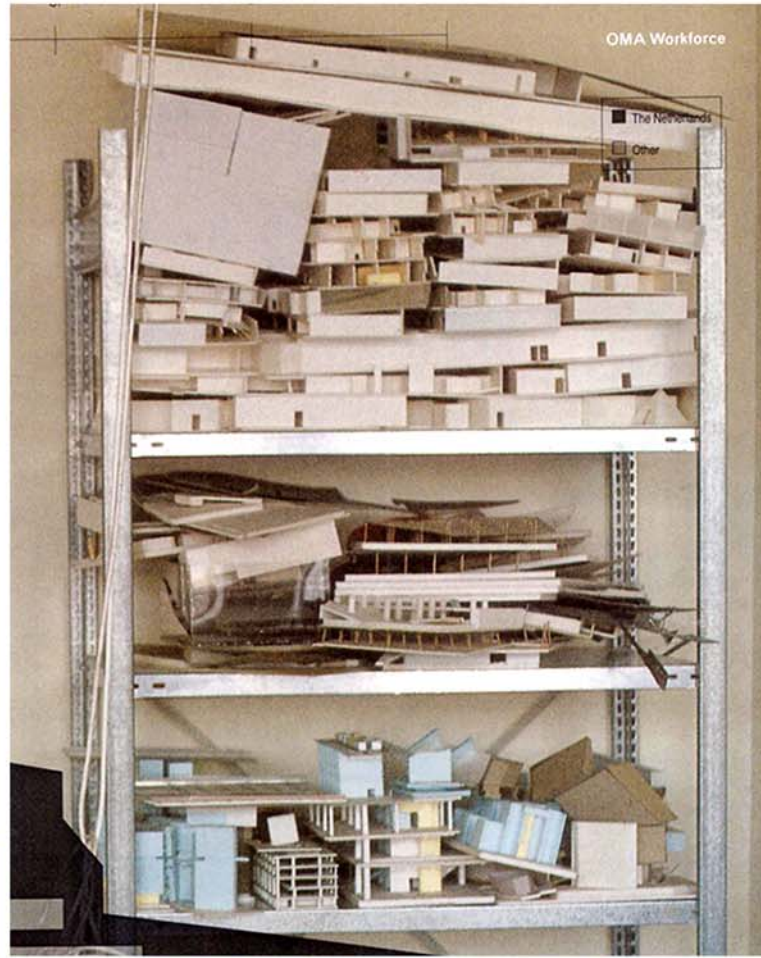
Through the eyes of Broek Bakema the latest European developments in tertiary planning will be incorporated. Through the eyes of Architectus, current Australasian experience and models will be included. The Rexroth Mannasmann Collective and Crowd will bring grassroots involvement in Melbourne teaching and an understanding of current spatial models for education.

The retention of knowledge must be prized and its production will be celebrated.

To this end, the incorporation of systems for archive and display is essential.

Close links will be established between the Faculty's library and academic output. This will dynamically engage with the buildings publishing of itself and all housed within it.





## Show + Tell Or Display and Celebrate

This proposal understands the whole of the building as city being a site for design learning. The importance of the design studio format to the Faculty's ethos and success cannot be overstated. These messy sites of intense production act as testing laboratories, social spaces and hotbeds of investigation.

The current failing is that the wealth of ideas and artefacts created has only limited space for display. The potential for discourse, learning and cross-pollination is only half realised. Our response will include strategies for the exhibition of the vast graphic output produced by the Faculty. Development drawings, working models and polished final presentations will be showcased to display the design process.

The display opportunities will be both informal and formal and of varying timeframes. Some are important but not precious. They will accrete and then be discarded, in the way that the universities poster bollards swell and are stripped. Others will be acquired in the manner of gallery and museum collections. The design of the building's infrastructure is designed to foreground and communicate this creative production.

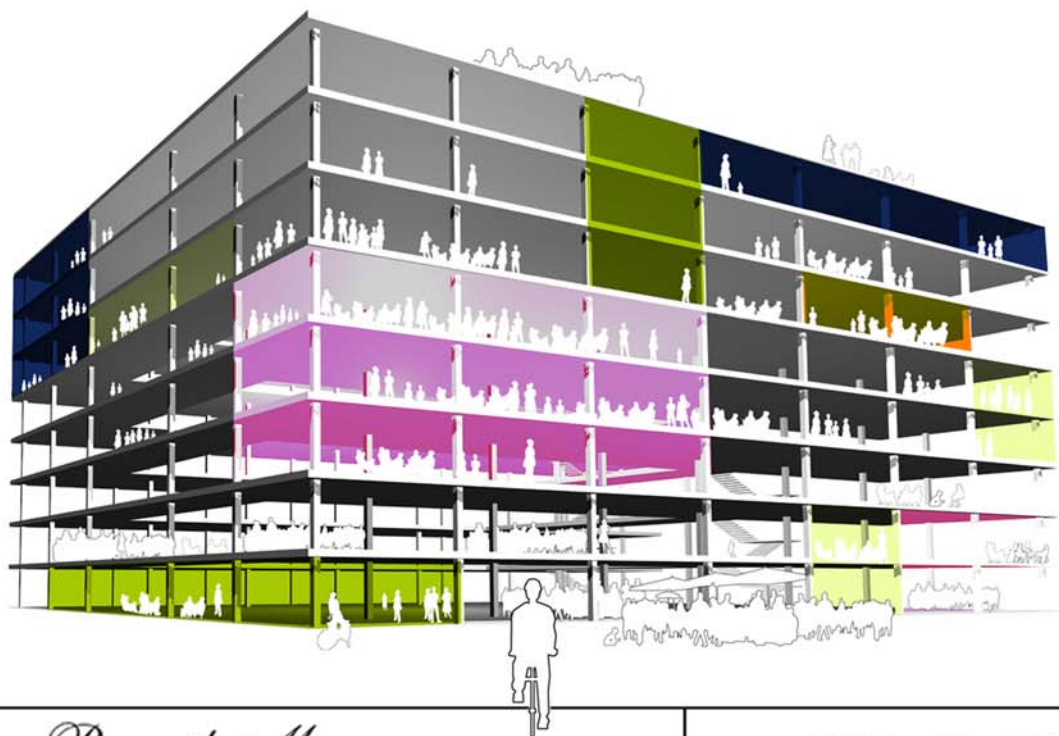
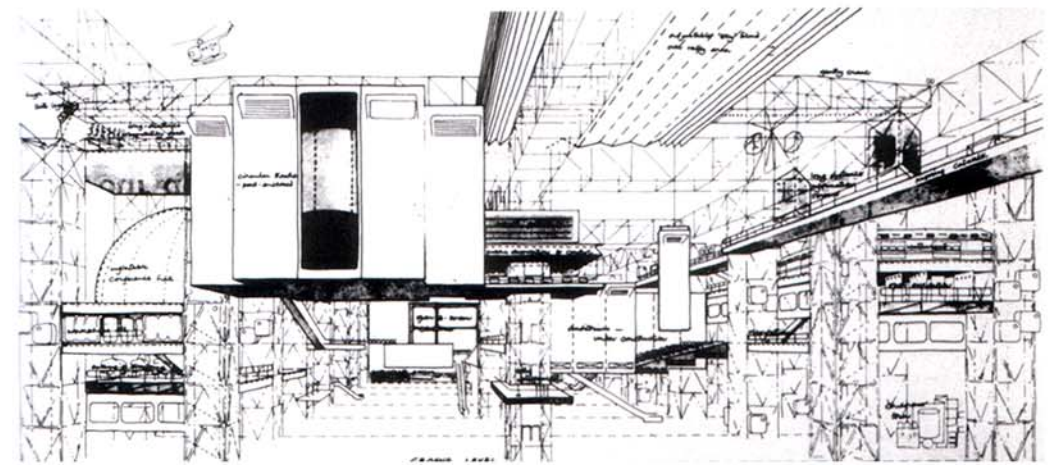
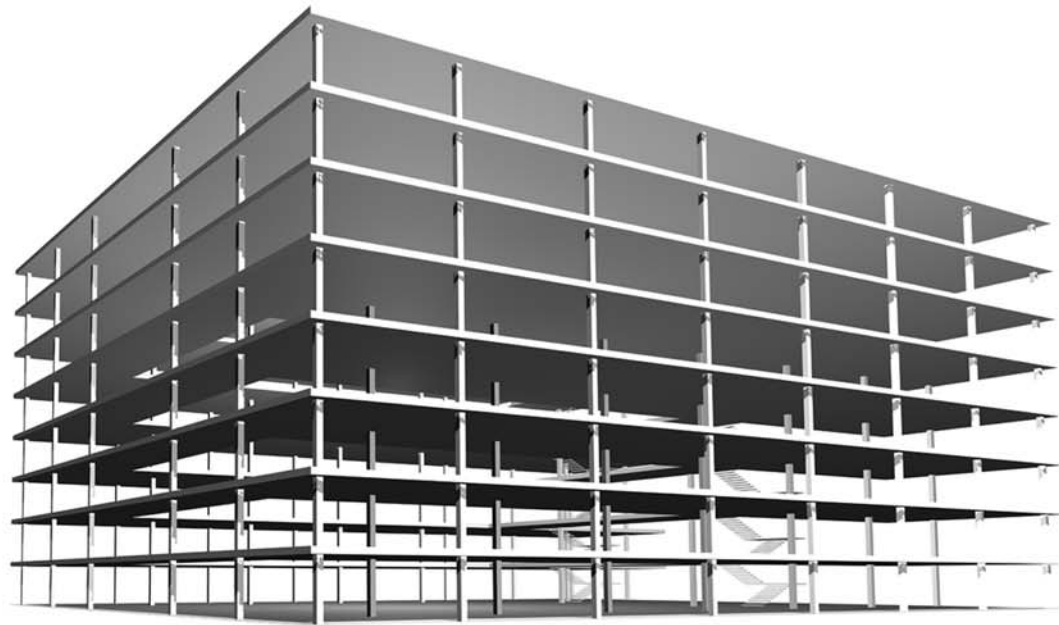
Connections and circulation around the design studios must also harness the potential of the studio spaces. They will allow for 'water cooler' moments and embrace theories of learning streets, flexible format and informal discussion. The surrounding networks will contain support facilities such as rapid proto-typing equipment, photographic studios, lounges and model workshops.

Within the building as a city, the studios will be distinctive and varied worlds. They will be professional spaces which can be easily colonised and personalised. These additions will be able to be removed; the spaces denuded in readiness for the next occupation.

This proposal also recognises that studio teaching involves drama. The studios are the spaces of spectacle. We propose a series of pavilions in a garden setting as additional design teaching space. Similar to London's Hyde Park pavilions these follies will be the subject of a biennial international design competition and constructed by students. The 2 year old follies will be relocated to the Faculty's Mt. Derrimut campus to act as a sculpture park. The pavilions will augment the teaching space provided within the new city, acting as a physical manifestation of the Faculty's integration with the University's other schools. They are an embodiment of the studio mantra of iterate, make and improve. These small, scattered sentinels will also fulfil some of the role of icon. But in a pluralistic platform, one that is ever-changing and multiple.







## Bones, Skin and Bowels

The new Melbourne University ABP Faculty building must be an exemplar in sustainable design and construction. The first step is an inventory of the existing site and buildings as to what can be retained or reused. Following this a material palette to promote design that inventively reuses items will be championed. The existing concrete structure with its fantastic story of Brian Lewis' maximisation of a fledgling Faculty is a most likely candidate to begin a program of retention and remodelling.

The proposed built fabric can be understood as bones and skin curated into a coherent village and designed with a theoretical and tangible framework for accretion and renewal.

The bones will be flexible and built to last well into the next century. The skin must be advanced, technological, inhabitable, adaptable and replaceable.

The new design will have an emphasis on update-ability, modularity and on sophisticated systems of connections. The bowels must utilise the most advanced building servicing and achieve a 6 star rating.

The building as city is conceived as Le Corbusier's Maison Domino meets Cedric Price's Fun Palace.

The new building will act as a testing ground and the edifice must be flexible and respond to the lessons learnt. The building will, at any time, be considered cutting edge and the building's performance continually monitored, updated and improved.

We propose that the student occupation of the building is akin to an apprenticeship in Building Science. Different year levels could be entrusted with a differing set of responsibilities. The second year students, from all disciplines, may monitor water collection, filtration and use. The mundane act of measuring and reporting is transformed into a conduit for camaraderie. The building becomes part 'Science Works', part technology demonstrator, a thoughtful and provocative territory for extending the possibilities of practice.



# Glocal Knowledge and Choreographed Collaboration

As a team our 4 practices will bring considerable experience to bear upon the new Melbourne University Architecture, Building and Planning Faculty. The combination of international and local offices allows us to bridge between knowledge of international tertiary buildings and the role Melbourne University and the Faculty building fulfil within the city.

Employing the strategy of new building as city allows our team members, with their differing abilities, to have effective input and focused roles.

**The Rexroth Mannasmann Collective** will bring knowledge of the Faculty and be involved in establishing the theoretical territory of the design framework. Our love of intimate, occupiable edges and considered details will be employed on common spaces. **Crowd Productions** will provide a material knowledge from their extensive industrial design experience. The interior spaces will be richer for their involvement. Their experience with diverse multi-destination commercial complexes will benefit the design coherence. **Broek Bakema** will bring knowledge of tertiary built environments from The Netherlands and wider European involvement. Their familiarity with the educational regeneration currently occurring in the Netherlands, similar to that in Australia, will mean new approaches are a core part of our proposal. The masterplanning of the city will benefit through their rigour in prioritising and implementing design strategies.

**Architectus** bring Australian knowledge of large building design, procurement and construction in Australasia. Their role will involve the interrogation of the design framework, understand the impacts of building servicing and construction, and ultimately ensure project delivery.

The Rexroth Mannasmann Collective is a company of  
**3 architects.**

Our directors are all alumni of the Melbourne University's AB+P Faculty and have a combined

**25** years experience teaching in the Faculty. We have been involved in numerous capacities and have taught Design, Graphic, Construction and Building Science subjects. As a result we possess intimate knowledge of the physical context and the intellectual environment the Faculty would occupy. We have a strong interest in educational architecture and believe in the edifice as teacher edetic.

Our practice, established in 2001, undertakes both built work and competition projects. Our ideas are often explored in model and the work has an emphasis on making and craft. The majority of our built work is residential in nature and investigates a lightness of resource usage and detail intensity.

The projects respond to context, physical and cultural, and unfold as a conversation between client and architect.

Our competition work is varied, although generally of a larger, urban scale. These are frequently undertaken in conjunction with other Melbourne architects, urban designers and landscape architects. Through these endeavours we have been able to explore ideas outside of the domestic realm and develop strategies for successful partnerships and collaboration.

The Rexroth Mannasmann Collective are also active participants in Melbourne's architectural discourse; curating competitions and exhibitions, sitting on institute juries and contributing to architectural media.

#### Exhibitions:

2008 Venice Biennale. Abundant Exhibition  
2006 Past Present Future. Emerging Architects Exhibition  
2005 Flush. A quest for the Melbourne's best public toilets in Art, Architecture + History  
2004, 2006, 2007 Suburban Detail of the Month Competition.  
2003 Small. New Architectural Practices Exhibition.  
2001 The Golden Toilet Awards 2.  
2000 The Golden Toilet Awards 1.

#### Competitions:

2007 Europan 9, Milton Keynes. England. Shortlisted Entry  
2006 Proposition 3047, Broadmeadows  
2005 Europan 8. Bergen, Norway.  
2004 Boyd House 1, Subaud competition  
2004 Vicurban \$120,000K affordable housing competition  
2003 Maroochydore Civic Square Competition  
2001 The Baunetz Internet Prize. Shortlisted Entry  
2000 St. Kilda Eco Housing: Sustainable Aged Care Development. Shortlisted Entry

#### Selected Awards:

2008 Architecture Australia Prize for Unbuilt Work – Honorable Mention for 'Agricultural Baroque'  
2008 Architecture Australia Prize for Unbuilt Work – Special Mention for the Suburban Detail of the Month competition  
2007 Archteam Award - Unbuilt work for 'Agricultural Baroque'  
2007 Archteam Commendation - Unbuilt Works for Baunetz internet competition  
2007 Archteam Commendation – Medium Built Works for Chandlers Rd extension, with Lucy Tibbits Architects.  
2007 RAI A Vic Award - Small projects category short listed entry for Oxford Street Apartment  
2005 Archteam Award - Small Built work for Fairview gazebo, Sherbrooke, Vic  
2005 Archteam Award - Unbuilt work for the Suburban Detail of the Month competition + calendar  
2005 Archteam Commendation - Large Built work for new house, the Terrace, Ocean Grove, Vic.

Crowd Productions is a company of  
**4 architects, interior + industrial designers.**

Crowd productions has 25 years of experience in industrial, communication and exhibition design and 9 years in commercial architecture focusing on spaces for entertainment and learning. Our design strengths lie in conceptualising multifunctional projects as arrays of distinct destinations and synthesising these elements into coherent and integrated project outcomes. We provide our clients with a range of services from: strategy development, defining user experiences, concept design, concept prototyping and testing, implementation and research. We have extensive experience in prototype design and implementation for developing architectural briefs and programs and implementation and testing of self service and electronic media technology.

Crowd Productions is a trans-disciplinary design practice, founded in 1983, to research and explore the potential of new design ideas and new technologies. Crowd Productions has a small core team of four in Melbourne and two in London. Crowd's structure is based on the film production-house model whereby projects are delivered through collaboration with an extended network of designers, researchers, makers, custom fabricators and specialists, on a project by project basis. This network integrates diverse experience ranging from academic research, architectural, digital and industrial design to construction and manufacturing expertise.

Crowd's recent projects have focused on creating carefully conceived and planned, digitally enhanced environments for the cinema industry and financial services based on customer and user-experience centred research and prototyping methodologies and ways of implementing modular commercial architectural roll-outs. These projects include flagship cinema complexes for Hoyts at Melbourne Central and Blacktown in Sydney, digital cinema capsules for ACMI in Melbourne, a conversation-and-customer-focused retail banking design for roll out for the National Australia Bank and a new streamlined retail environment for the RTA at Blacktown. Other projects have included communication strategies and exhibition projects for the International Institute for Industrial and Environmental Economics in Lund, Sweden at the 2000 World Expo in Frankfurt, exhibition installations for the Museum of Sydney at the Hyde Park Barracks Museum, including their 2000 Sydney Olympics exhibition.

#### Selected Awards:

Finalist Reece Bathroom innovation Award 2008 for Cirrus MVR modular water recycling bathroom  
Winner. Inside Magazine Idea design award for best Retail Interior 2006 for Hoyts Cinema Complex at Melbourne Central  
Highly commended. Inside Magazine Idea design award for best Retail Interior 2008 for RTA retail registry at Blacktown  
Winner. IES national Lighting Design Award for excellence 2006 for Hoyts Cinema Complex at Melbourne Central  
Winner. IES Victorian Lighting Design Award for excellence 2006 for Hoyts Cinema Complex at Melbourne Central  
One of three top ranked practitioners in Victorian design awards. Lab 3000 Digital Design Biennale 2004 for Hyperlounge digital cinema capsules

Broek Bakema is a company of  
**40 architects, urban designers + planners.**

Broekbakema combines pioneering designs with a professional approach to the construction process.

Every commission starts with a design analysis of the preconditions, such as the schedule of requirements, location and social embeddedness. This way we guarantee an architectural concept that stems from the assignment and then translate this concept into a concrete design with the appropriate spatial layout, form, choice of materials and details.

Broekbakema also remains closely involved in the realisation phase, rendering the entire process from inception to completion both transparent and effective.

A successful building is always the result of good collaboration with the principal. The choices that present themselves are held up against the principal's and the user's requirements as well as the schedule and the budget. Broekbakema is a professional partner throughout this process, combining experience and knowledge of the contemporary building world with inspiration, intuition and talent. Broekbakema designs houses, schools, museums, utility projects at all scale levels, interiors, urban development plans and renovations of recent monuments.

#### Educational Projects:

+ Corlaer 2 College - BNA Building of the Year 2007 East  
+ Twents Carmel College De Thij - BNA Building of the Year 2008 East  
+ Windesheim School of Media and School of Business & Economics Zwolle  
+ City Grammarschool Arnhem  
+ World Music and Dance Centre Rotterdam  
+ Media aan de Maas Hogeschool Rotterdam  
+ Campus University Reykjavik  
+ Campus Presikhaaf Arnhem  
+ KSA Technology Pavilion

#### Selected Awards since 1988:

1 / TWENTS CARMEL COLLEGE DE THIJ OLDENZAAL. First prize Dutch Architects Association, Building of the year 2008, region East-Netherlands.  
2 / CORLAER COLLEGE 2 NIJKERK. First prize Dutch Architects Association, Building of the year 2007, region East-Netherlands.  
3 / TGM ASTEN. Nomination Dutch Architects Association, Building of the year 2007, region South-Netherlands.  
4 / LABORATORY RY ORGANON OSS. Honourary mention architecture prize Oss 2006.  
5 / HEADOFFICE KR ORGANON OSS. Honourary mention architecture prize Oss 2006 and prize of the public.  
6 / MEETING CENTRE KD ORGANON OSS. First 'welstand'prize Oss  
7 / PARKING GARAGE SHELL RIJSWIJK. Nomination PPP-award  
8 / HOUSES AT THE WATER WORMER. PARTEON ARCHITECTURE PRIZE 2008  
9 / TECHNICAL PAVILLION KSG APELDOORN. APELDOORN ARCHITECTURE PRIZE, FIRST PRIZE 2001

Architectus is a company of  
**250 architects, interior + urban designers.**

Architectus brings together over 250 design and planning professionals to provide comprehensive design and management services in architecture, urban design, planning and interior architecture. We have offices in Sydney, Auckland, Brisbane, Melbourne and Shanghai. The offices are linked by seamless technology, the highest business and social standards, and a common philosophy, providing an extensive network of resources for our clients to call upon. Project teams are aided by excellent design review and communication systems and rigorous delivery controls.

We have a proven track record in the delivery of large projects. Recently completed projects such as the Gallery of Modern Art in Brisbane and the University of Sunshine Coast Chancellery were delivered within the client's budget and programme requirements and exceeded the quality expectations of the users and government. The University of Western Sydney student housing completed in December 2008 was delivered 20% below budget, attributed to the selection of sensible building materials, a simple and repetitive structural system and high quality documentation. The design of the Brisbane Supreme Court has been successfully developed around a changing client budget and is currently under construction and due to be completed on schedule by December 2011.

Architectus directors have been honoured with over 85 major professional awards and are widely published in Australia, New Zealand and internationally. They have been exhibited at the Architectural League of New York as well as Tokyo, Venice, Barcelona, Sydney, Melbourne, Perth and Auckland. Directors have also been invited as keynote speakers at international environmental, architecture, and documentation conferences.

We will apply our extensive experience in the delivery of fully documented projects, which have demonstrated benefits including increased quality and satisfaction of the client brief and reduced construction, operations and maintenance costs. Detailed design and consultation skills will ensure all brief issues are identified and resolved prior to documentation, minimising client and user disagreements and contract variations.

Architectus is widely acknowledged as an industry leader in the area of Building Information Modelling (BIM) and Autodesk Revit. BIM allows for the creation of all presentation and construction documents from a single integrated 3D digital model of the building and services for the life of the project. BIM coordinates all building elements, provides early detection of conflicts and maximises project productivity through full integration of plans, schedules, and construction documents. BIM also allows us to better test, analyse and integrate our ESD initiatives with accuracy.

#### Selected Awards

2009 NZIA - National Award for Urban Design – Queen Street Auckland  
2008 NZIA - National Award for Architecture – Trinity Apartments  
2008 AIA - Queensland Public Architecture Award – University of Sunshine Coast Chancellery  
2008 AIA - Harry S Marks Award for Sustainable Architecture – University of Sunshine Coast Chancellery  
2007 RAI A - National Award for Public Architecture – Queensland Gallery of Modern Art  
2007 RAI A - Queensland Public Architecture Award – Queensland Gallery of Modern Art  
2004 NZIA - National Award for Architecture – House at Stanley Point  
2003 RAI A - National Award for Architecture – Jade Stadium  
2002 NZIA - National Award for Architecture – St Peters Technology Building  
1999 NZIA - National Award for Architecture – Mathematics, Statistics & Computer Science Building, University of Canterbury  
1999 RAI A - National Commercial Award – Neville Bonner Building  
1997 NZIA - National Award for Architecture – Clifford Forsyth House  
1996 RAI A - National Environment Citation – Cotton Tree Housing  
1995 RAI A - National Commercial Award – Ski n Skurf Waterski Park  
1995 RAI A - National Robin Boyd Award – Hammond Residence  
1992 RAI A - National Robin Boyd Award – Clare Residence

referee: **Shelley Penn** p: 9651 6256 m: 0413 805 317

web: **www.rexroth.net.au**

*The Rexroth Mannasmann Collective*

referee: **James Gately** m: 0411 644 469

web: **crowd.com.au**

**CROWD** crowd productions

referee: **Professor Paul Thomas** p: (07) 5430 1101

web: **www.broekbakema.nl**

**broekbakema**

referee: **to be confirmed**

web: **www.architectus.com.au**

**architectus**™